

Step 1 - Mount plunger into the assembly about half way.



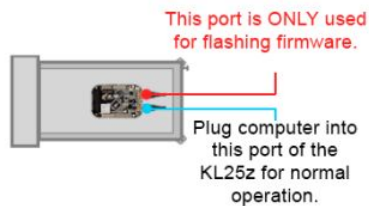
Step 2 - Connect the Plunger washer to the slide assembly being careful not to push down too hard and make sure it goes all the way in.



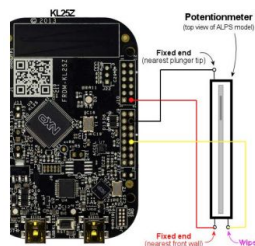
Step 3 - Insert the plunger so your cabinet is between your plunger plate and assembly. Then insert and tighten the screws for your plunger down until snug.



Step 4 - Next mount the KL25Z into your cabinet as per the mounting instructions below using the 4 included wood screws.

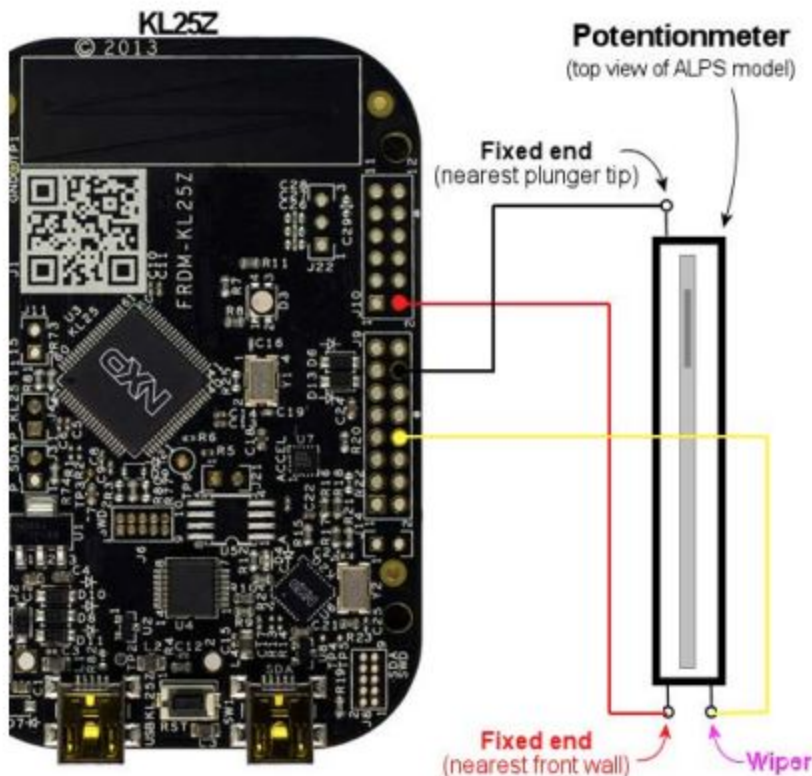
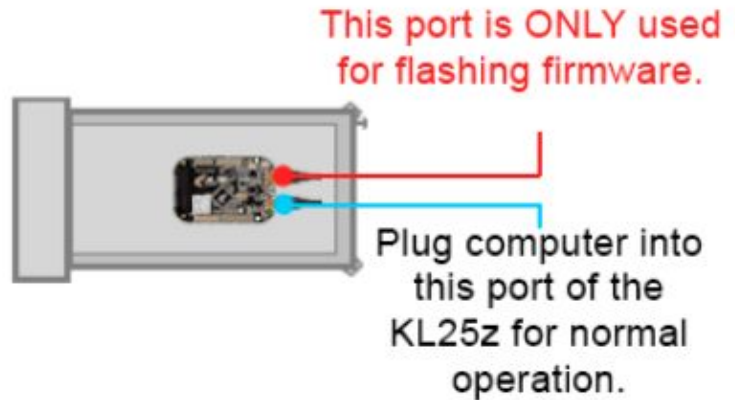
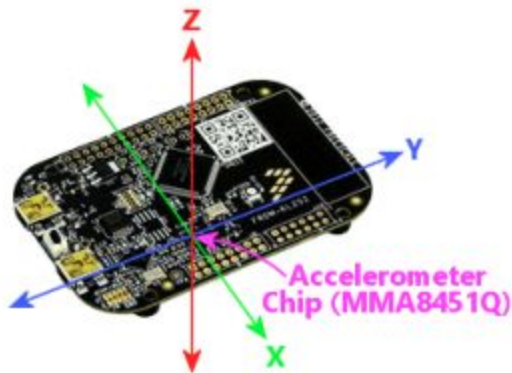


Step 5- Plug in your potentiometer into your KL25Z using the supplied already connected jumper wires. (NOTE: your wire colors may vary please see Potentiometer setup on page 2)



Step 6 - Plug in your computer into the Joystick USB port on the KL25Z and setup your pinball software to use the Z axis for plunger and the X/Y access for nudging.

**Mount KL25Z in the cabinet.** We have already programmed your KL25Z to have the USB ports facing the front of the machine. In order for the accelerometer to work correctly for nudging you will want to mount it or you can always run the Pinscape Controller Setup and change that to another configuration. More information can be found at <http://mjrnnet.org/pinscape/BuildGuideV2/BuildGuide.php?sid=nudge>



### Potentiometer Setup

We wire our pots differently from the Pinscape instructions because of the potentiometer we use.

Your Potentiometer may come in a couple different wire color configurations. Wire according to the diagram making sure to match the correct pin configurations on the KL25Z and colors below.

Red = Red  
Black = Blue  
Yellow = White

### How to wire buttons to the KL25Z

<http://mjrnnet.org/pinscape/BuildGuideV2/BuildGuide.php?sid=buttons>

**Pinscape initial setup instruction** The following link has a lot of information on how to setup and configure your board. We have done this for you already but you can always do it again if you need to.

<http://mjrnnet.org/pinscape/BuildGuideV2/BuildGuide.php?sid=kl25zSoftwareSetup>